



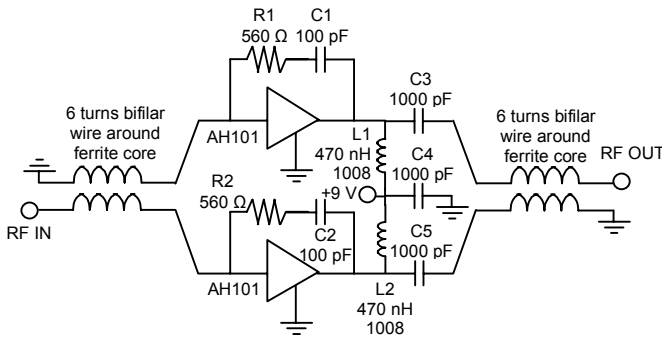
AH101 Push-Pull Application Circuit For CATV Designs

Parameters	Frequency			
Frequency	50 MHz	450 MHz	750 MHz	860 MHz
S21	11.4 dB	10.8 dB	10.4 dB	10.2 dB
S11	-17.4 dB	-18.8 dB	-18.9 dB	-24.6 dB
S22	-17.3 dB	-20.4 dB	-15.5 dB	-13.7 dB
Output IP2	84.0 dBm			
Output IP3	50.3 dBm			
Noise Figure	6.00 dB	5.14 dB	5.30 dB	5.42 dB
Supply Bias	9 V @ 200 mA per device			

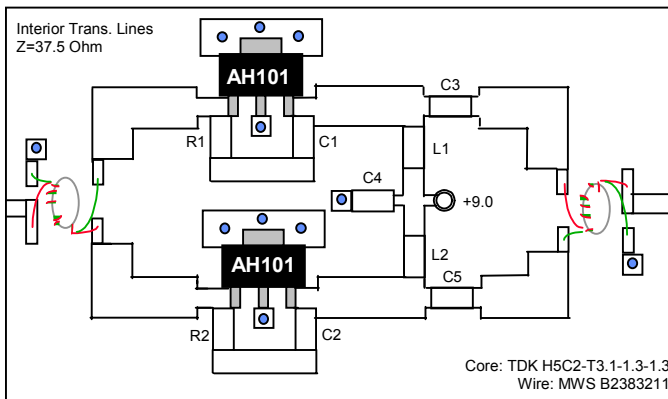
CATV Parameters	
CSO	83.3 dBc
CTB	68.6 dBc

77 channels flat loaded
Input level = 34 dBmV/channel

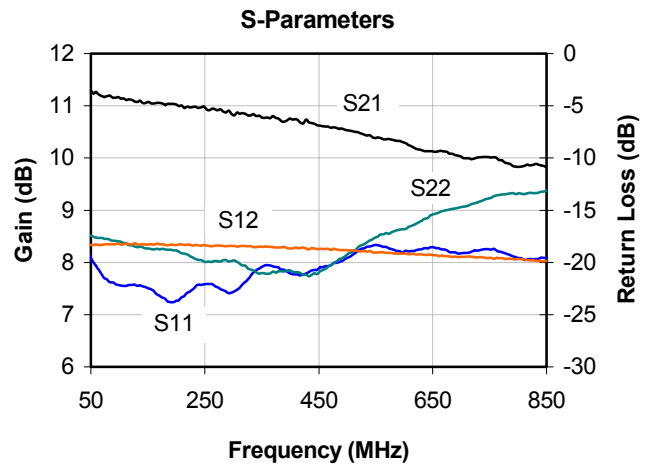
Typical parameters reflect performance in the 75Ω push-pull application circuit. OIP3 is measured with 2 tones at +17 dBm/tone with 10 MHz spacing. OIP2 is measured with +17 dBm at the fundamental.



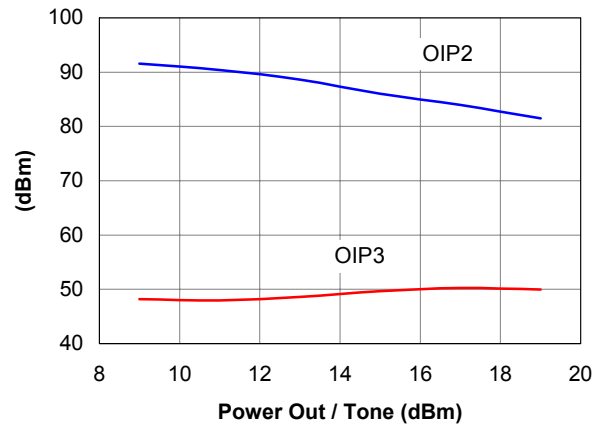
FR4 Board Layout (T=28 mils to ground plane)



The AH101 should be thermally mounted according to what is shown in the datasheet.



OIP2 & OIP3 vs. Power Out



OIP3 is measured with 2 tones at 850, 860 MHz.
OIP2 is measured at 100 MHz.